



# AGE GROUP ROAD NATIONAL CHAMPIONSHIPS

---





AGE GROUP ROAD  
NATIONAL  
CHAMPIONSHIPS



Event Director: Janette Douglas  
Event Manager: Charlotte Pearson  
Race Manager: Shanelle Barrett  
Host Club: Cycling Rotorua  
PCP: Brendan Patterson  
Technical Delegate: Mark Ireland  
Commissaires Secretary: Lyle Hastings  
Assistant Commissaires: Heather Smyth, Graeme Bell  
Graeme Moffat, Robin Wood, Tony Hartley, Pam Coe  
Jan Carol, Kerry Ludlam, Mike Cornelius, Ray Sheath  
Wayne Silby, Jeremy Christmas



AGE GROUP ROAD  
NATIONAL  
CHAMPIONSHIPS



# Roll Call



AGE GROUP ROAD  
NATIONAL  
CHAMPIONSHIPS



This presentation covers some key messages and any changes to what has been published. It is not intended to replace comprehensive information available to all riders and team officials on the event website and in the event manual.

All those attending the event are asked to read all the information available to help all of those attending have a successful championships.

Please ask any member of the team if you have any questions.

Event Website - [www.roadnationals.nz](http://www.roadnationals.nz)



ŠKODA





AGE GROUP ROAD  
NATIONAL  
CHAMPIONSHIPS



## Key notes from our Event Director

- Team Managers responsible to pass information onto your riders
- Event Website – [www.roadnationals.nz](http://www.roadnationals.nz)
- Review Event Manual for all event details
- Race Office, Medical base & DFSNZ located at the Waikite Valley Hall
- No access to school buildings during the event (note school is in term on Friday)
- Portaloos are provided near the courts. No use of School toilets.
- This is Smoke, Drug, Alcohol free event.
- Drone use is prohibited unless by prior agreement
- Familiarise yourselves with our Covid-19 Code
- Results will be posted at race office available on a live link through the website.
- Any urgent or contingency plans will be communication via text message



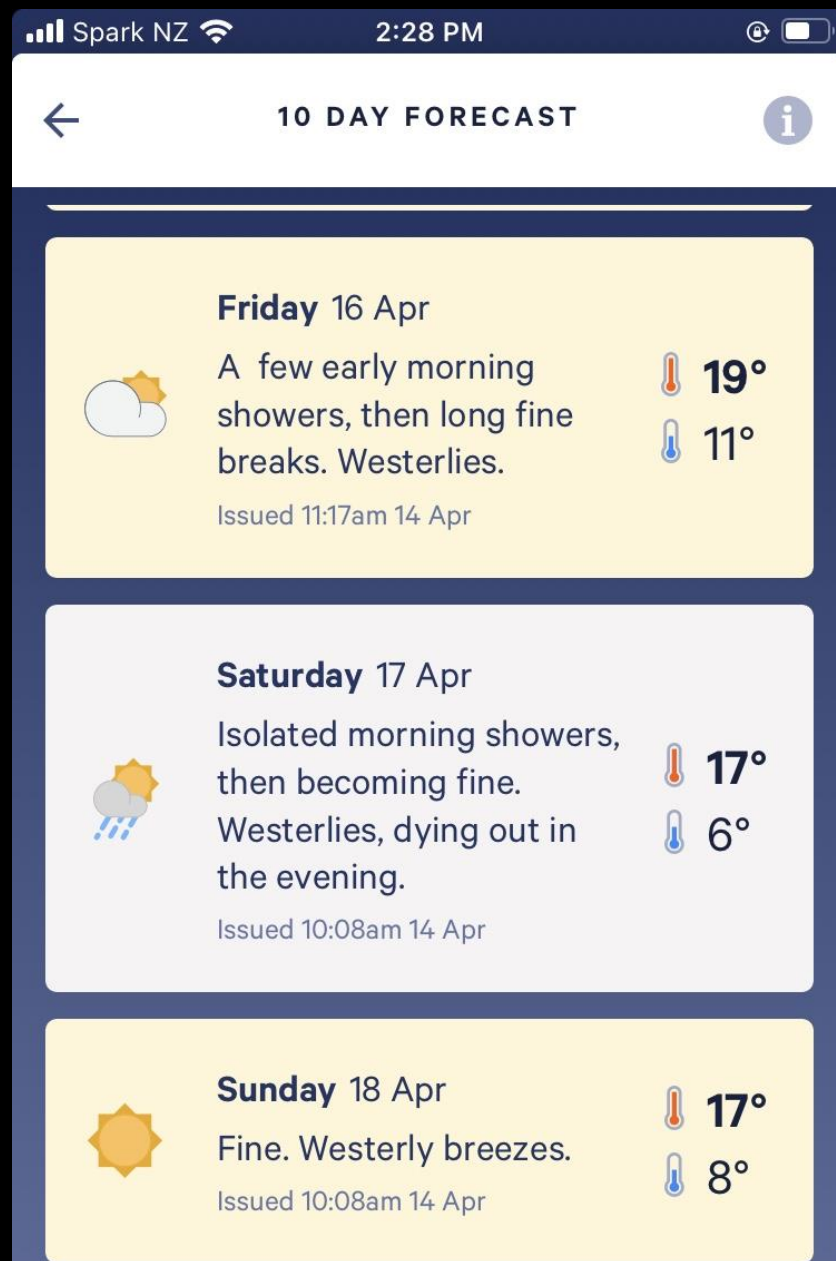
AGE GROUP ROAD  
NATIONAL  
CHAMPIONSHIPS



## Health and Safety

- We have planned to keep you safe however health and safety is everyone's responsibility.
- Extra care is required travelling to the Time Trial Start and post the finish line of the Road Race. Riders must obey road rules and any instructions from event staff or traffic management staff.
- Roads are open at all times. There will be public traffic on the roads.
- There will be additional traffic around the school at key times.
- If you do not cross the finish line you must report to a Commissaires or Cycling New Zealand Staff member.
- Report any incidents to a Cycling New Zealand Staff member.

# Weather







# Key notes from our PCP

- Race information as per [Event Communiques](#) on website.
- Racing under UCI and Cycling New Zealand Road and Track Rules
- [CNZ-Technical-Regulations-Version-Jan-2021-v-3](#)
- [UCI Regulations](#)
- Cycling New Zealand Road & Track scale of penalties apply
- Scratchings to be advised through your team manager.
- Expect professional and courteous behaviour from riders and team officials
- Riders must wear their approved Club jerseys and shorts. Shorts may only display sponsors that are detailed on the rider's Cycling New Zealand Membership.
- Rollout / Gear Check / Sign on (time and places as per the Event Manual)

# Key notes from our PCP

- Number placement as per the Event Manual.

## Time Trial

One number in centre of lower back



## Road Race

Two numbers on the lower pocket area, with a hand width separation.





AGE GROUP ROAD  
NATIONAL  
CHAMPIONSHIPS



## Expectations at Presentation Ceremonies

- Riders to wear their Race kit
- No sun glasses/hats
- Street shoes accepted (must have closed toe)
- No jandals or open toed slip ons
- Will take place in the Waikite Valley Hall (Race Office)
- Times per the Event Manual (also available in the race office)

# Key notes from our Race Manager

- All Roads are open – keep left at all times.
- The event has an approved traffic management plan in place to assist with managing traffic however, riders should expect and anticipate public vehicles on the course at all time as the roads are open.
- Spectators are asked to remain on the school side of the start/finish line and are asked not to attend the start of the time trial due to restricted space.
- Riders are not permitted to warm up on any of the courses – use Hossack Road
- Riders or team managers are required to notify a Commissaires or Cycling New Zealand staff if a rider withdraws
- We have identified the following hazards on the course. Riders should expect additional hazards during the course of the event.
  - Stock movement across the roads.
  - Vehicles on course – Roads are Open – Must keep left
  - One way bridges

- We have contracted Peak Safety to provide medical coverage for the event. In the event of an emergency advise a member of our event team (eg the next marshall) as soon as you can, or dial 111.
- You are welcome to bring club tents and erect these on the school tennis courts. Please bring weights. Please do not peg into the astro turf. We have contracted overnight security but it is your own risk.
- There is no parking on Waikite Valley Road. Parking is available in the school grounds – you must be in by 9:30am on Friday. Alternative parking is on Hossack Road, ensure you are parked well off the road and on the grass verge.
- You must obey traffic management signals when not racing

# Venue Site Map





AGE GROUP ROAD  
NATIONAL  
CHAMPIONSHIPS



## TIME TRIAL SPECIFIC

- Roads are Open
- Use Left half of left lane only (never cross centre of the road)
- Turn identified by a Single Cone with a white cover – it is narrow
- Final Roll out & Technical Check at the school.
- There is limited space available at the start line so please only report to the final technical check 15 minutes prior to start time, no earlier.



- No Parking on course or at the start line
- The Road is open – must keep to the left

- No Parking on course or at the start line
- The Road is open – must keep to the left





# Time Trial – 24.5km

- No Parking on course
- The Road is open – must keep to the left





AGE GROUP ROAD  
NATIONAL  
CHAMPIONSHIPS



## ROAD RACE SPECIFIC

- Roads are OPEN – keep left and never cross centre
- Road Conditions are as expected on NZ rural roads.
- Designated litter zone provided.
- Sign On located outside the hall under the Cycling New Zealand tent.
- Service Wagons – neutral service provided.
- There is traffic management in place at the finish line however the safest place for all riders is the left hand side of the road. Riders should expect oncoming traffic.
- Roll out required for the top 5 finishes in U15, U17 and U19.



# Para Road Race

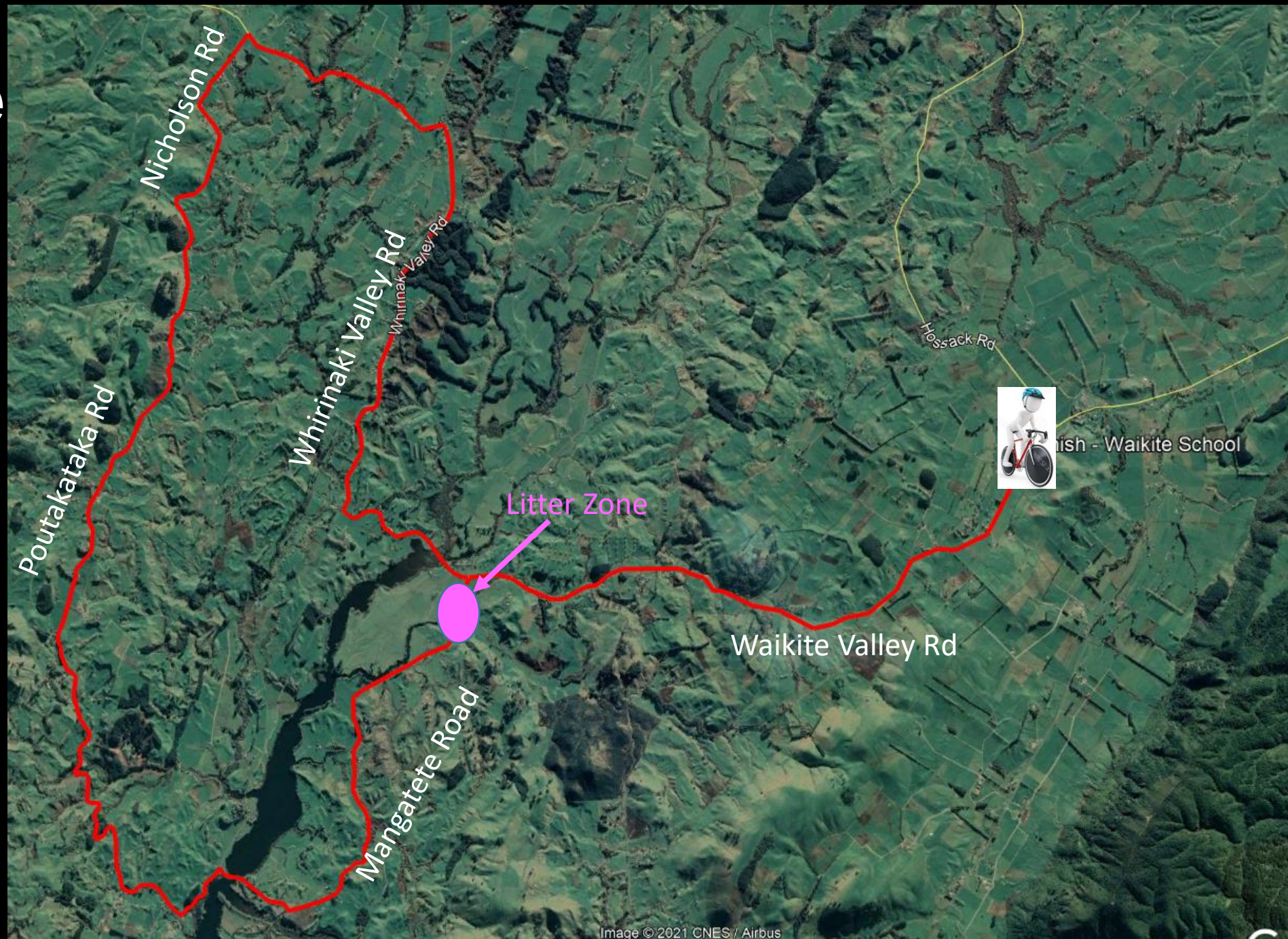
T1-2 – 23km – 1 lap

H1-5 – 33km – 2 laps





# Road Race Multi Laps





ANY QUESTIONS?

Good Luck, Race Hard, fair and safe





# AGE GROUP ROAD NATIONAL CHAMPIONSHIPS

---

